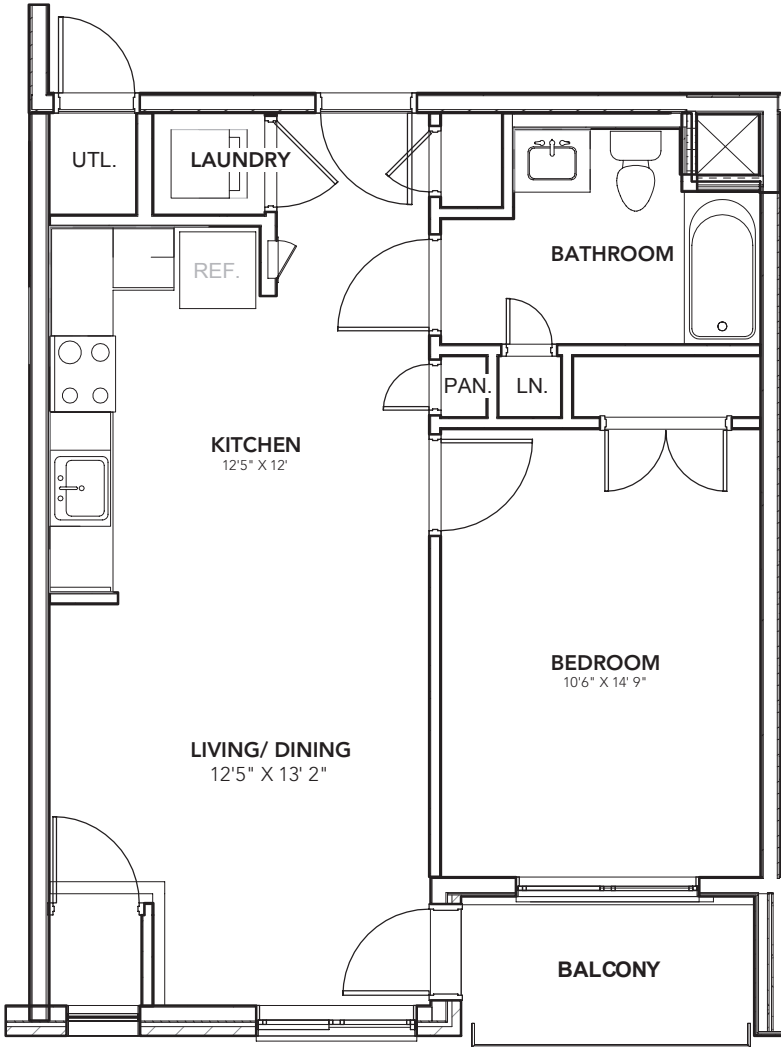


**STRATA**  
EAST

STRATA EAST | 26 NORTH 6TH STREET | ALLENTOWN



**1A1-E**

**1 BEDROOM**

**1 BATH**

**736 SQ FT**

**CEILING HEIGHT 8'11"**



FLOORS 3 – 5



2ND FLOOR

Interested in the STRATA lifestyle?

Call 610-841-CITY (2489), visit us on the web at STRATALIFE.cc, or email STRATA@landmarkcommunities.com

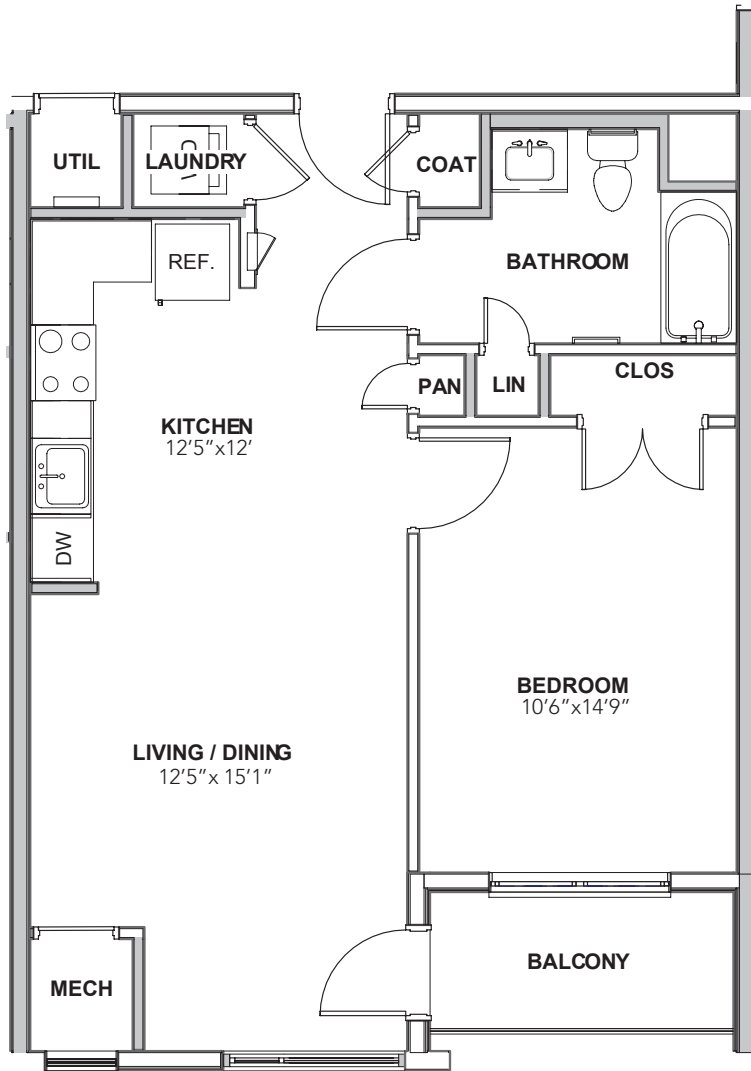
These floor plans are artist renderings, conceptual only, and based on current development plans which are subject to change without notice. Square footage and dimensions are approximate and may vary in actual building. Prices are subject to change without notice.



STRATA

EAST

STRATA EAST | 26 NORTH 6TH STREET | ALLENTOWN



1A2-E

1 BEDROOM

1 BATH

769 SQ FT

CEILING HEIGHT 8'11"



FLOORS 2 - 5

Interested in the STRATA lifestyle?

Call 610-841-CITY (2489), visit us on the web at [STRATALIFE.cc](http://STRATALIFE.cc), or email [STRATA@landmarkcommunities.com](mailto:STRATA@landmarkcommunities.com)

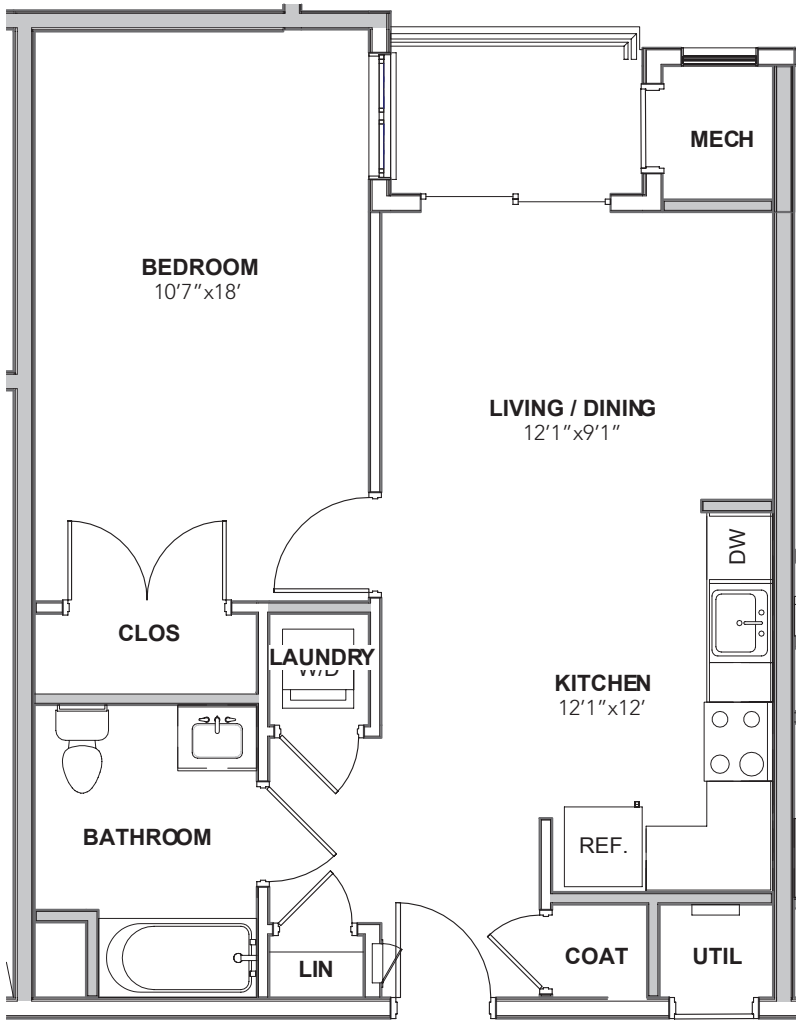
These floor plans are artist renderings, conceptual only, and based on current development plans which are subject to change without notice. Square footage and dimensions are approximate and may vary in actual building. Prices are subject to change without notice.



STRATA FLATS AT CITY CENTER | 27 NORTH 7TH STREET | ALLENTOWN PA 18101 | 610.841.CITY (2489) | STRATALIFE.CC

**STRATA**  
EAST

STRATA EAST | 26 NORTH 6TH STREET | ALLENTOWN



**1C-E**

**1 BEDROOM**

**1 BATH**

**745 SQ FT**

**CEILING HEIGHT 8'11"**



FLOORS 2 - 5

Interested in the STRATA lifestyle?

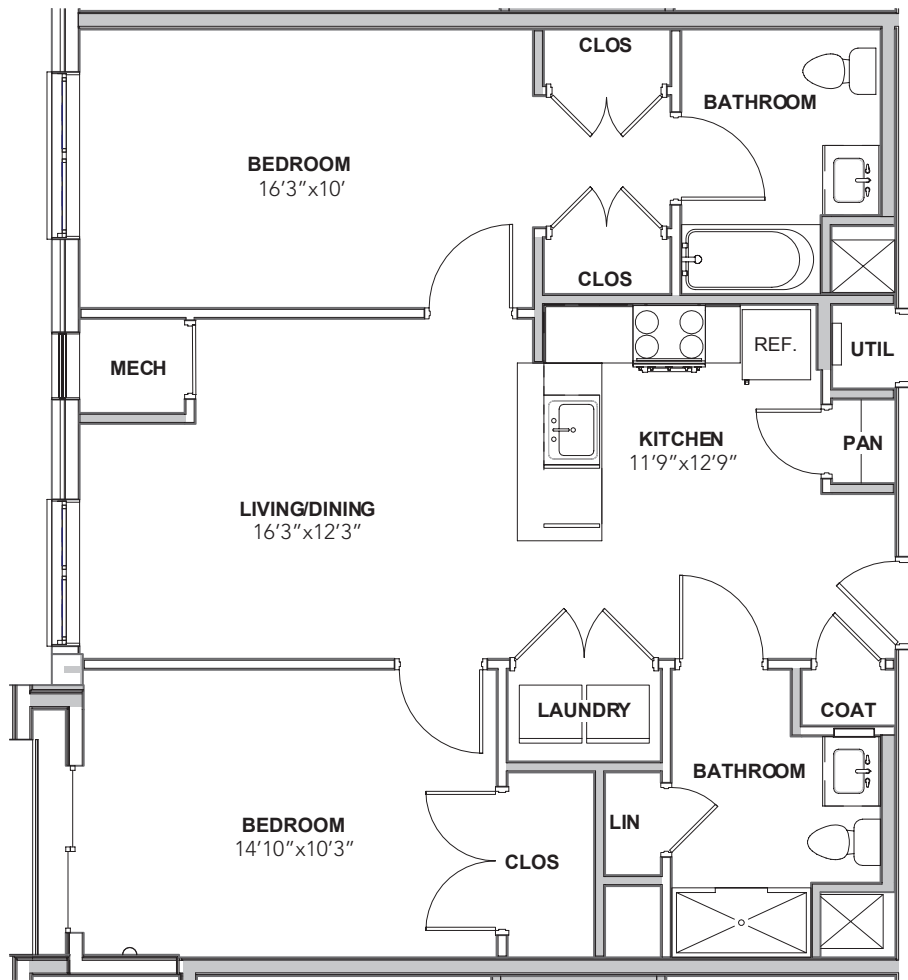
Call 610-841-CITY (2489), visit us on the web at STRATALIFE.cc, or email STRATA@landmarkcommunities.com

These floor plans are artist renderings, conceptual only, and based on current development plans which are subject to change without notice. Square footage and dimensions are approximate and may vary in actual building. Prices are subject to change without notice.



**STRATA**  
EAST

STRATA EAST | 26 NORTH 6TH STREET | ALLENTOWN



**2B-E**



**2 BEDROOM**

**2 BATH**

**1056 SQ FT**

**CEILING HEIGHT 8'11"**



2ND FLOOR

Interested in the STRATA lifestyle?

Call 610-841-CITY (2489), visit us on the web at STRATALIFE.cc, or email STRATA@landmarkcommunities.com

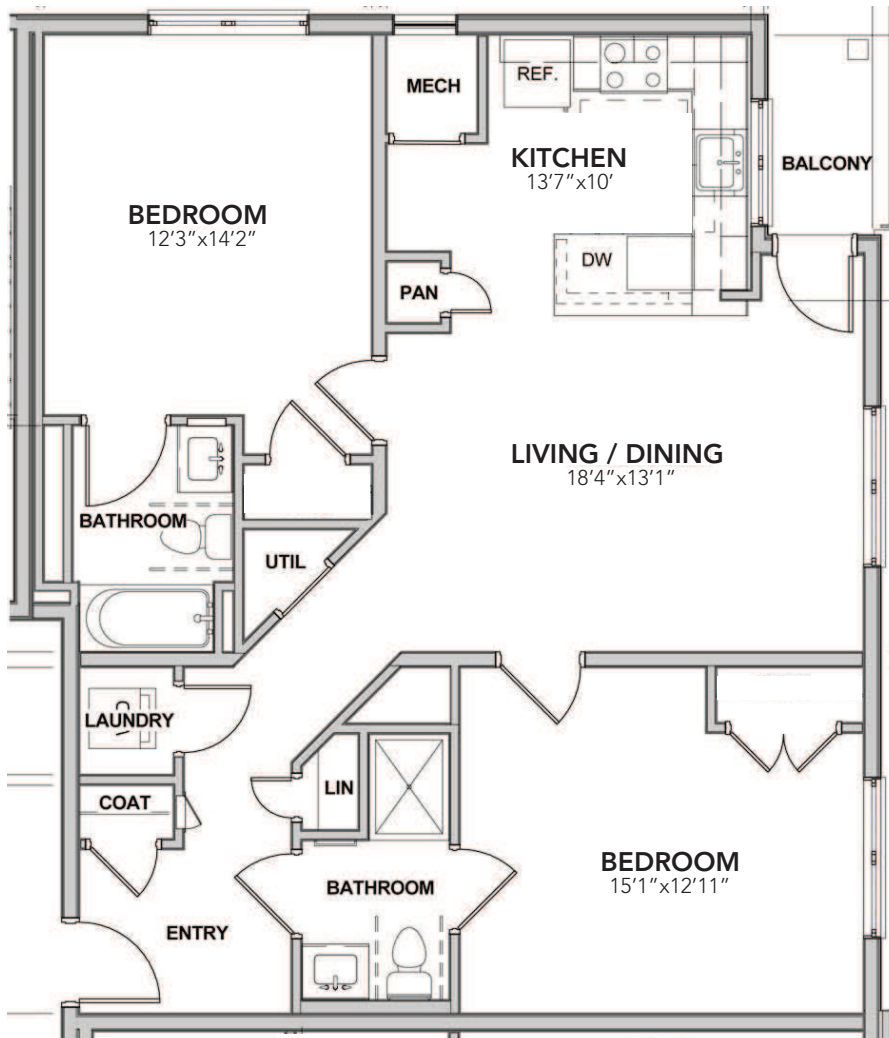
These floor plans are artist renderings, conceptual only, and based on current development plans which are subject to change without notice. Square footage and dimensions are approximate and may vary in actual building. Prices are subject to change without notice.



STRATA

EAST

STRATA EAST | 26 NORTH 6TH STREET | ALLENTOWN



2C1-E

2 BEDROOM

2 BATH

1170 SQ FT

CEILING HEIGHT 8'11"



FLOORS 4 - 5



FLOORS 2 - 3

Interested in the STRATA lifestyle?

Call 610-841-CITY (2489), visit us on the web at [STRATALIFE.cc](http://STRATALIFE.cc), or email [STRATA@landmarkcommunities.com](mailto:STRATA@landmarkcommunities.com)

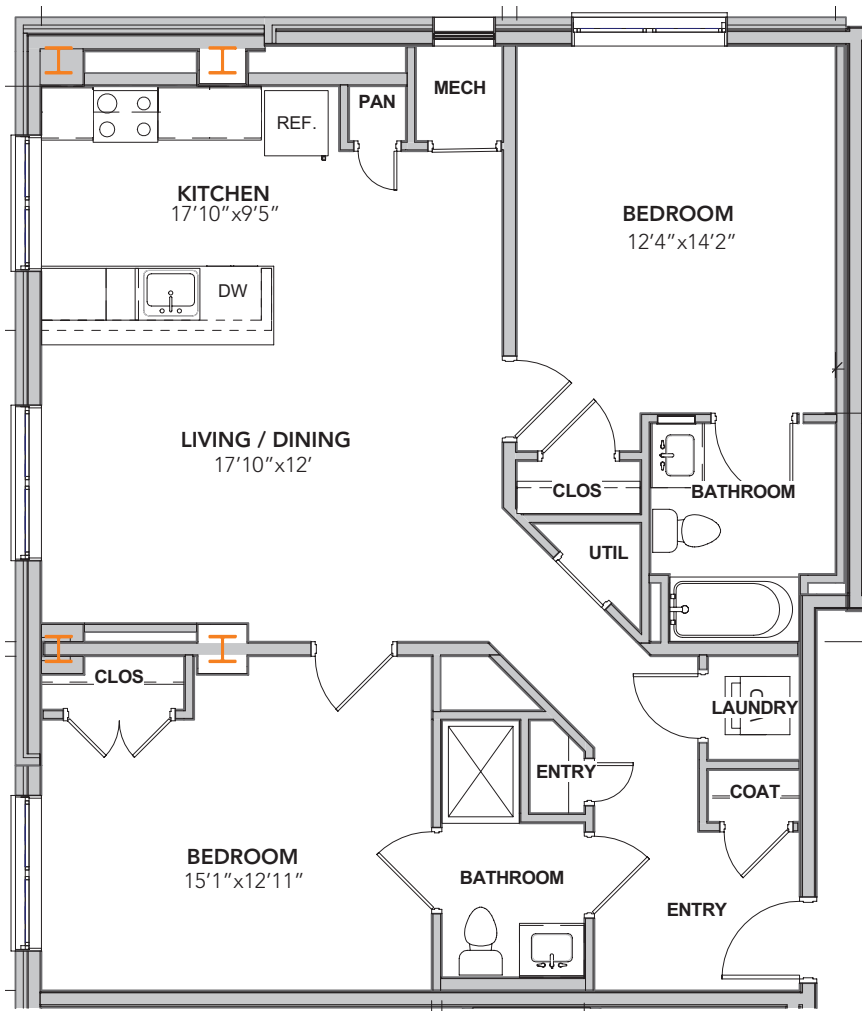
These floor plans are artist renderings, conceptual only, and based on current development plans which are subject to change without notice. Square footage and dimensions are approximate and may vary in actual building. Prices are subject to change without notice.



STRATA

EAST

STRATA EAST | 26 NORTH 6TH STREET | ALLENTOWN



2C2-E

2 BEDROOM

2 BATH

1200 SQ FT

CEILING HEIGHT 8'11"



2ND FLOOR

Interested in the STRATA lifestyle?

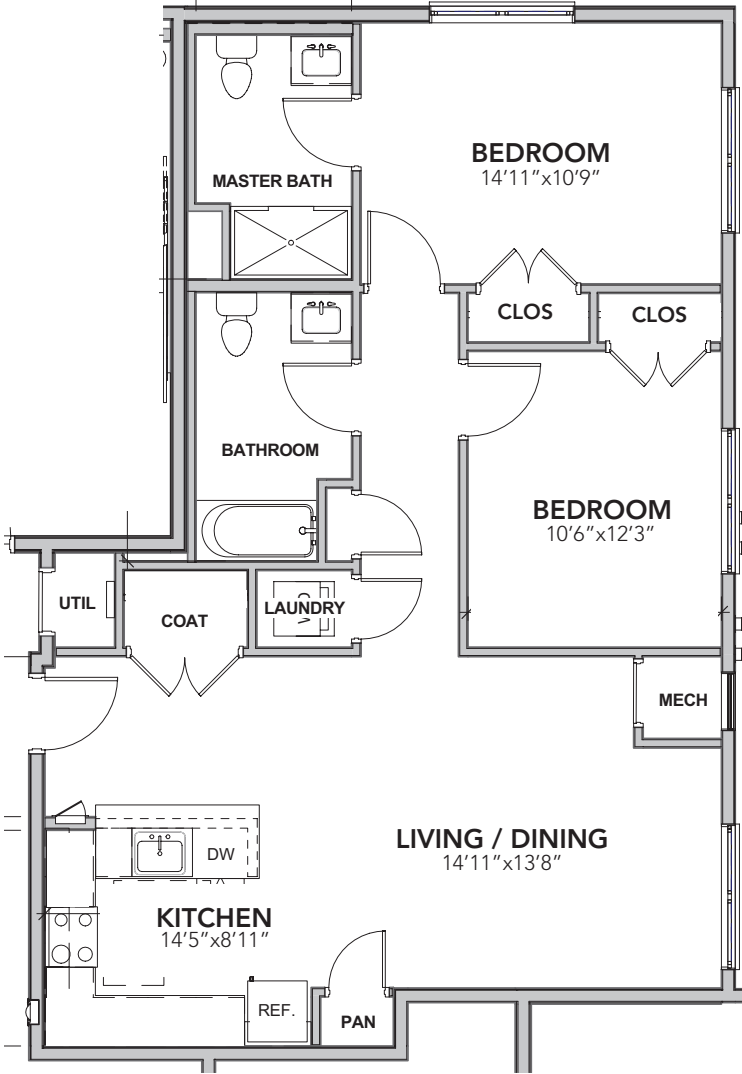
Call 610-841-CITY (2489), visit us on the web at [STRATALIFE.cc](http://STRATALIFE.cc), or email [STRATA@landmarkcommunities.com](mailto:STRATA@landmarkcommunities.com)

These floor plans are artist renderings, conceptual only, and based on current development plans which are subject to change without notice. Square footage and dimensions are approximate and may vary in actual building. Prices are subject to change without notice.





STRATA EAST | 26 NORTH 6TH STREET | ALLENTOWN



2E-E

2 BEDROOM

2 BATH

1084 SQ FT

CEILING HEIGHT 8'11"



FLOORS 2 - 5

### Interested in the STRATA lifestyle?

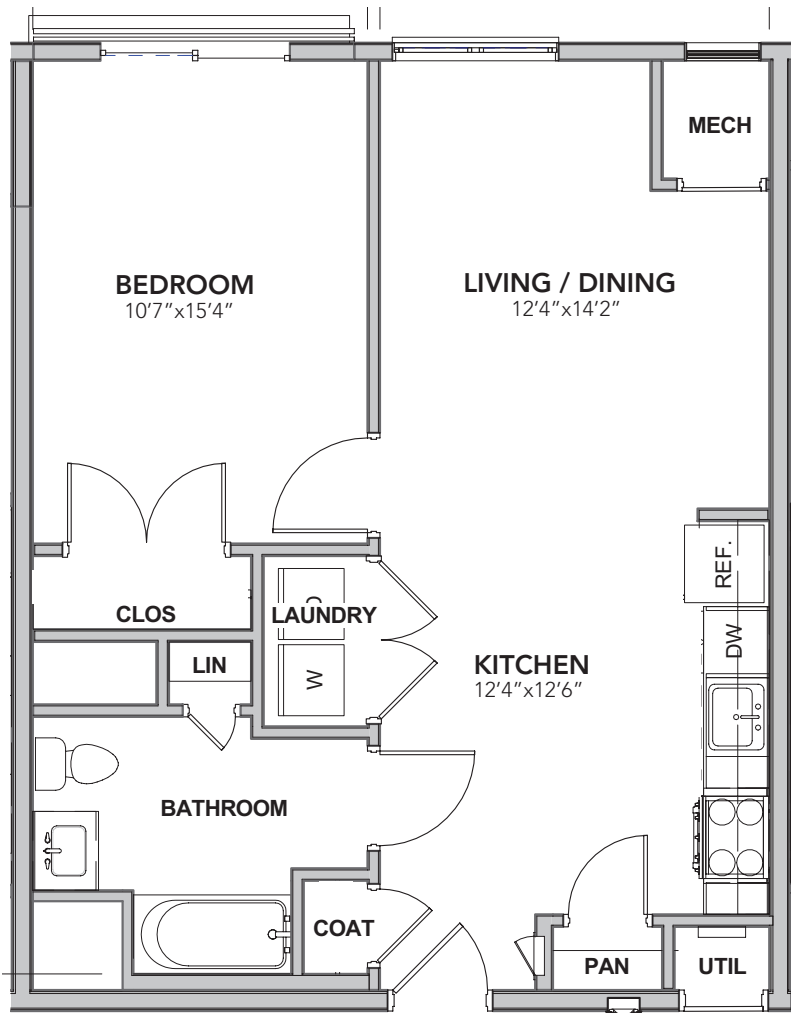
Call 610-841-CITY (2489), visit us on the web at STRATALIFE.cc, or email STRATA@landmarkcommunities.com

These floor plans are artist renderings, conceptual only, and based on current development plans which are subject to change without notice. Square footage and dimensions are approximate and may vary in actual building. Prices are subject to change without notice.



**STRATA**  
EAST

STRATA EAST | 26 NORTH 6TH STREET | ALLENTOWN



**1B-E**



**1 BEDROOM**

**1 BATH**

**729 SQ FT**

**CEILING HEIGHT 8'11"**



2ND FLOOR

Interested in the STRATA lifestyle?

Call 610-841-CITY (2489), visit us on the web at [STRATALIFE.cc](http://STRATALIFE.cc), or email [STRATA@landmarkcommunities.com](mailto:STRATA@landmarkcommunities.com)

These floor plans are artist renderings, conceptual only, and based on current development plans which are subject to change without notice. Square footage and dimensions are approximate and may vary in actual building. Prices are subject to change without notice.





STRATA

EAST

STRATA EAST | 26 NORTH 6TH STREET | ALLENTOWN

2A2-E

2 BEDROOM

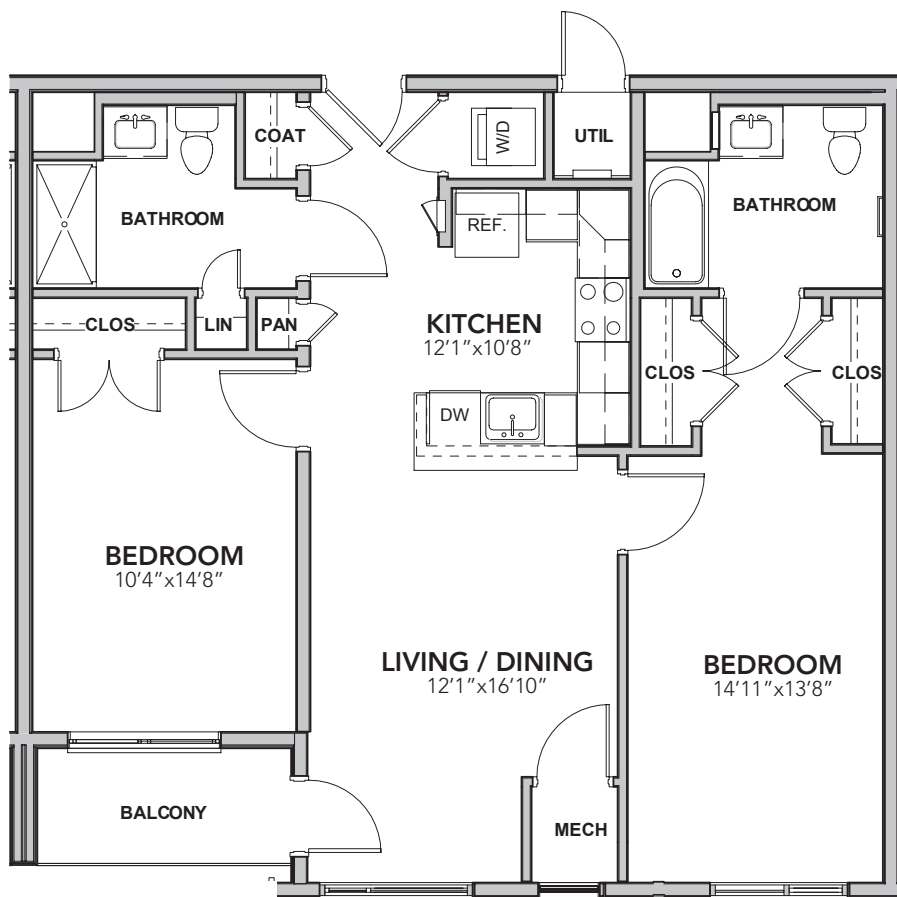
2 BATH

1089 SQ FT

CEILING HEIGHT 8'11"



FLOORS 2 - 5



Interested in the STRATA lifestyle?

Call 610-841-CITY (2489), visit us on the web at STRATALIFE.cc, or email STRATA@landmarkcommunities.com

These floor plans are artist renderings, conceptual only, and based on current development plans which are subject to change without notice. Square footage and dimensions are approximate and may vary in actual building. Prices are subject to change without notice.



STRATA FLATS AT CITY CENTER | 27 NORTH 7TH STREET | ALLENTOWN PA 18101 | 610.841.CITY (2489) | STRATALIFE.CC

STRATA

EAST

STRATA EAST | 26 NORTH 6TH STREET | ALLENTOWN

2A1-E

2 BEDROOM

2 BATH

1059 SQ FT

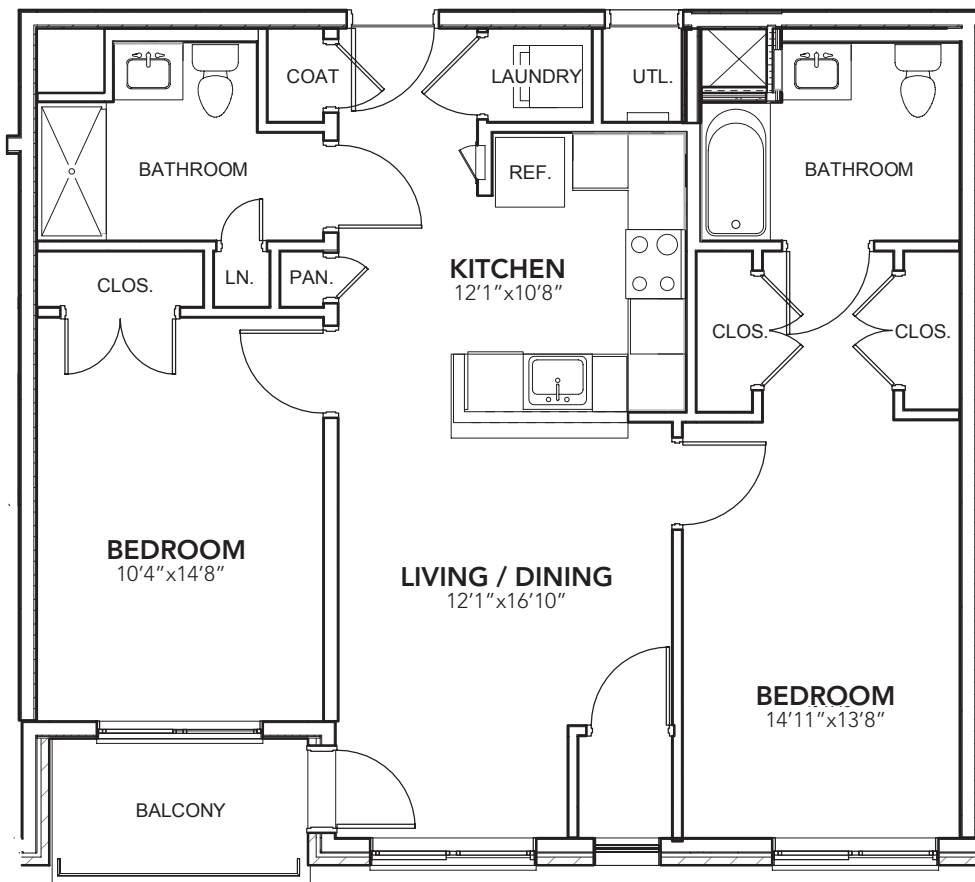
CEILING HEIGHT 8'11"



FLOORS 3 - 5



2ND FLOOR



Interested in the STRATA lifestyle?

Call 610-841-CITY (2489), visit us on the web at [STRATALIFE.cc](http://STRATALIFE.cc), or email [STRATA@landmarkcommunities.com](mailto:STRATA@landmarkcommunities.com)

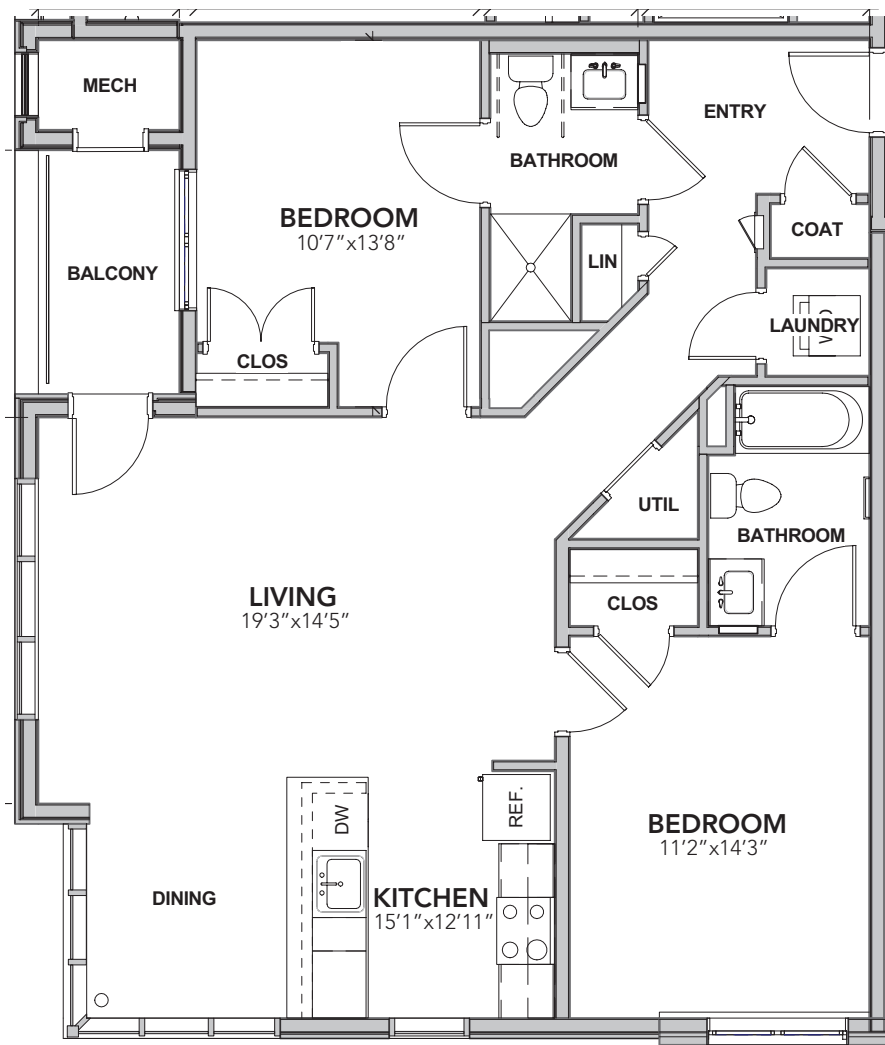
These floor plans are artist renderings, conceptual only, and based on current development plans which are subject to change without notice. Square footage and dimensions are approximate and may vary in actual building. Prices are subject to change without notice.



STRATA

EAST

STRATA EAST | 26 NORTH 6TH STREET | ALLENTOWN



2D-E

2 BEDROOM

2 BATH

1195 SQ FT

CEILING HEIGHT 8'11"



FLOORS 2 - 5

Interested in the STRATA lifestyle?

Call 610-841-CITY (2489), visit us on the web at STRATALIFE.cc, or email STRATA@landmarkcommunities.com

These floor plans are artist renderings, conceptual only, and based on current development plans which are subject to change without notice. Square footage and dimensions are approximate and may vary in actual building. Prices are subject to change without notice.

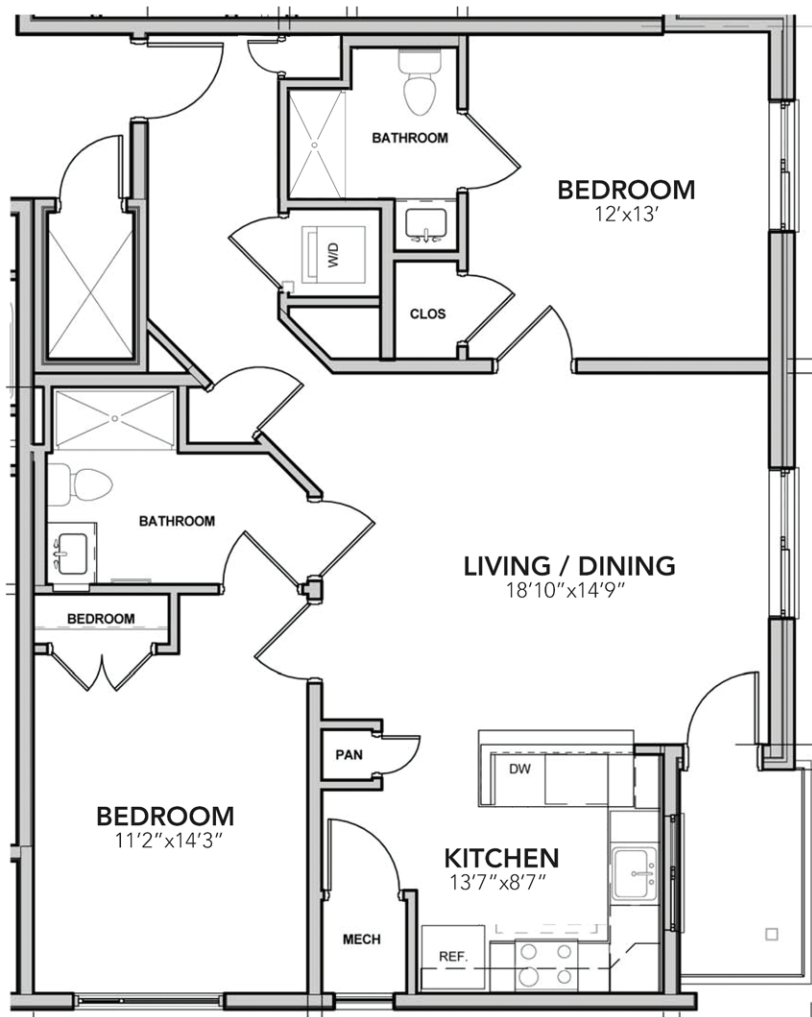


STRATA FLATS AT CITY CENTER | 27 NORTH 7TH STREET | ALLENTOWN PA 18101 | 610.841.CITY (2489) | STRATALIFE.CC

STRATA

EAST

STRATA EAST | 26 NORTH 6TH STREET | ALLENTOWN



2F-E

2 BEDROOM

2 BATH

1134 SQ FT

CEILING HEIGHT 8'11"



FLOORS 2 - 5

Interested in the STRATA lifestyle?

Call 610-841-CITY (2489), visit us on the web at [STRATALIFE.cc](http://STRATALIFE.cc), or email [STRATA@landmarkcommunities.com](mailto:STRATA@landmarkcommunities.com)

These floor plans are artist renderings, conceptual only, and based on current development plans which are subject to change without notice. Square footage and dimensions are approximate and may vary in actual building. Prices are subject to change without notice.

